

DELEGATE

WORKING TOGETHER

RICHARD LANIGAN
PRESIDENT



MARY MAHONEY
SECRETARY-TREASURER

MONDAY, JUNE 6, 2016



Disney Coronado Springs

Welcome to the 27th OPEIU Convention

Welcome to Orlando, Florida, and the opening day of the 27th Convention of the Office and Professional Employees International Union.

Delegates and alternates from all seven regions of OPEIU have gathered here in sunny Orlando this week to participate in the convention. Please make sure you attend all sessions and carefully consider the resolutions presented. Your knowledge and experience will prove invaluable as we chart the future course of OPEIU.

We hope you enjoy this week at the Disney Coronado Springs, a union hotel. The International Union's staff and representatives are here to make everything run as smoothly as possible, and to help make your stay both productive and enjoyable. You will be able to easily identify all staff members, as their photos appear in the latest edition of White Collar and on the 27th OPEIU Convention app. They also will be wearing BLUE identification badges and shirts.

Check out page 3 for a schedule of interesting speakers we'll hear from this week, and page 4 for a sneak peak at the many fun activities that are planned. It's going to be a great week, as we celebrate our convention theme "Working Together!"

DELEGATE



Get Connected.



Keep Informed!

OPEIU has built a special mobile app just for the 27th Convention.

It has all the important information you'll need this week, and features to enhance your event experience. To download the app on your mobile device, follow these easy steps:

1. Open GooglePlay or the AppStore and search for 27th OPEIU Convention or enter the following URL into your mobile web browser: <https://crowd.cc/s/gxRO>
2. Once downloaded, open the app and tap on **27th OPEIU Convention**

If you'd like to receive push notifications, be sure to log into the app.

You can also receive text alerts from OPEIU via your mobile device by texting OPEIU to 97779.

By providing your cell phone number, you understand that OPEIU may send you automated calls and/or text messages on your cell phone on a periodic basis. OPEIU will never charge for alerts, but carrier message and data rates may apply.

Convention Speaker Schedule



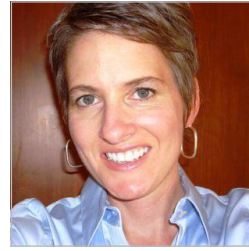
Mike Williams



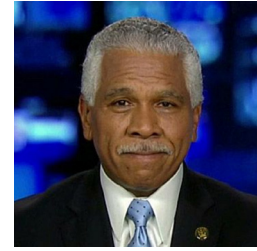
Arturo Rodriguez



Elizabeth Bunn



MaryBe McMillan



Hilary Shelton



Thea Lee



Richard Trumka



R. Daniel Davis



Van Jones



Brea Ellis

Monday, June 6

Mike Williams

President
Florida AFL-CIO

Arturo Rodriguez

President
United Farm Workers of
America

Elizabeth Bunn

Organizing Director
AFL-CIO

Tuesday, June 7

MaryBe McMillan

Secretary-Treasurer
North Carolina AFL-CIO

Hilary Shelton

Washington Bureau Director
and Senior Vice President for
Advocacy and Policy, NAACP

Thea Lee

Deputy Chief of Staff
AFL-CIO

Wednesday, June 8

Richard Trumka

President
AFL-CIO

R. Daniel Davis, D.P.M.

President
American Podiatric Medical
Association

Thursday, June 9

Van Jones

CNN Political Commentator

Brea Ellis

Representative
Union Privilege

Have a **great** convention
and an enjoyable week!

A Busy Social Calendar

In addition to important business, delegates and guests will have the opportunity to gather together and get to know each other better. OPEIU has scheduled a variety of opportunities to do just that, and to relax and unwind after a hard day of work.

Sunday, June 5

Welcome Reception

5:30 p.m. – 8:30 p.m.

Casitas Courtyard

Weather backup – Coronado K

Monday, June 6

Disney's Epcot Center

4 p.m. to park close at 9:00 p.m.

Dinner available from 7 p.m. – 9 p.m.

at the American Adventure Rotunda, followed by IllumiNation's: Reflections of Earth show from 9 p.m. - 9:15 p.m.

Buses depart Disney's Coronado Springs for Epcot at 3:15 p.m., and return after the IllumiNation's show at approximately 9:15 p.m.

Disney Fun Facts ▼

It's Not a Small World, After All! Covering nearly 40 square miles, Walt Disney World is about the size of San Francisco or two Manhattan islands. Of the nearly 25,000 acres, a third is designated as conservation land.

The Magic Kingdom is actually on the second floor. There are tunnels under Disney World's Magic Kingdom that allow employees and cast members to move between the different areas. The tunnels help costumed cast members avoid incongruities. That's why you never see Tomorrowland cast members in Frontierland, and vice versa. But because Florida is at sea level and engineers couldn't dig down, these "underground" tunnels are really at ground level and the park is built on top of them.

Tuesday, June 7

Cirque du Soleil – La Nouba

6 p.m. – 8 p.m.

Downtown Disney

Buses depart Disney's Coronado Springs for Cirque du Soleil at 4:30 p.m., and will return after the show concludes at approximately 8 p.m.

After Party

8:30 p.m. – 11:30 p.m.

Coronado K

Wednesday, June 8

Disney's Magic Kingdom

4 p.m. to park close at midnight

Buses depart Disney's Coronado Springs for Magic Kingdom at 3:15 p.m. Complimentary Disney buses are available throughout the day and evening for return to the hotel.

Thursday, June 9

Farewell Dinner Buffet

5:30 p.m. – 8:30 p.m.

Cabanas Beach

Weather backup – Coronado K

